

# LONE STAR

CUTTING SOLUTIONS

## Trailblazer

### Rotary Pro

## Introducing the Trailblazer Rotary Pro by Lone Star Cutting Solutions:

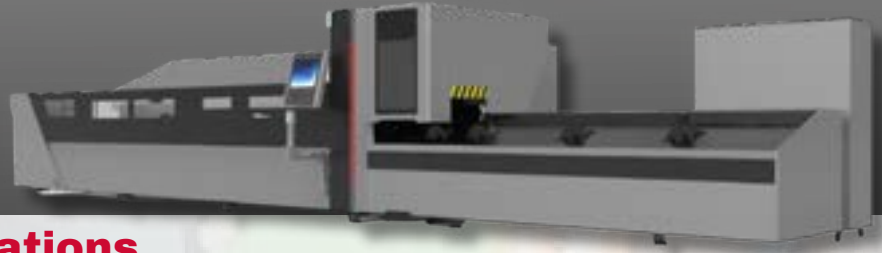
Your Ultimate CNC Tube Laser Cutting Solution

Enhance your CNC tube laser cutting capabilities with the Trailblazer Rotary Pro by Lone Star Cutting Solutions. Designed to meet the diverse needs of industries such as mechanical engineering, system construction, and furniture manufacturing, our advanced machine offers a wide range of benefits, taking full advantage of the design possibilities offered by laser-cut tubes and profiles.



# Trailblazer

## Rotary Pro

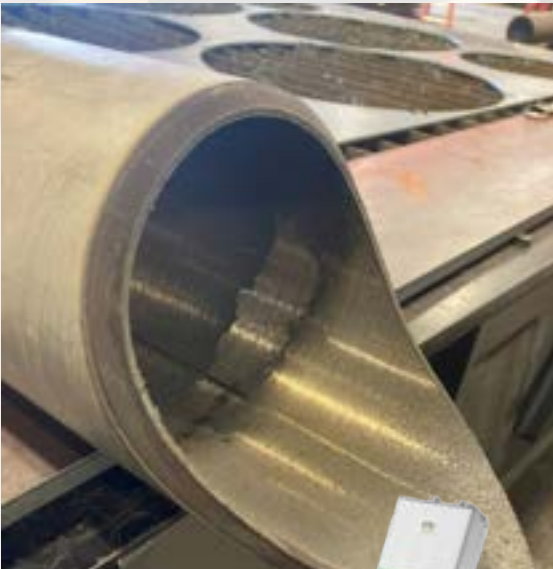
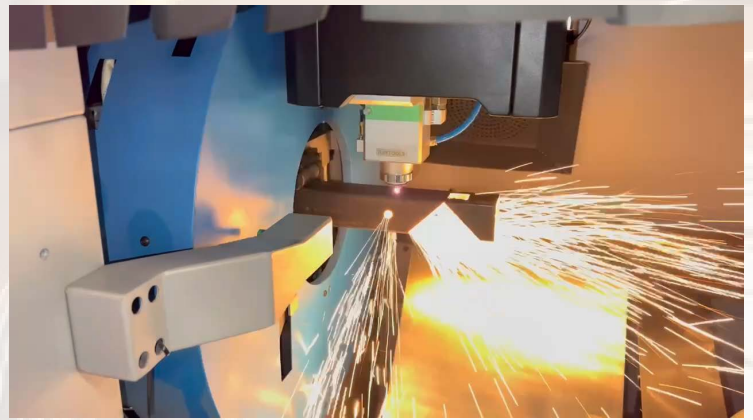


### Machine Specifications

- Semi-Automatic In-Feed for enhanced workflow efficiency
- 18 feet of Outfeed for seamless material handling
- Capability to perform 45° bevel cuts for precision and versatility
- Non-adjustable beveling degrees for consistent and reliable results

2 Year Warranty

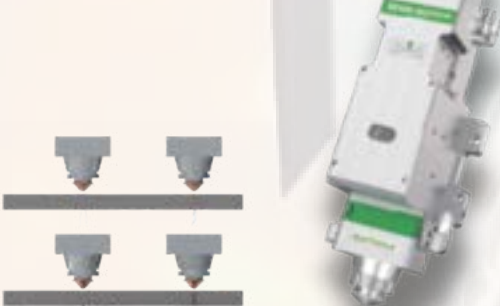
Free Lifetime Phone Support



- Maximum Round Tube Diameter: 8 inches
- Maximum Square Tube Dimensions: 6 inches x 6 inches
- Compatible Material Types: Round Tube, Square Tube, Rectangular Pipe, Oval Tube, and more
- Maximum Material Processing Length: 20 feet
- Maximum Material Processing Weight: 500 pounds
- Laser Specifications: HG (Farley) 6kw
- X/Y Positioning Accuracy: +/- 0.001 inches

### Laser Head

- The focus is controlled by the inner precision servo motor, no need for manual operation
- Punching time reduced by 80% compared to common cutting head. Best match for high-speed thick metal material cutting and highly reflective materials.
- Large and complete cutting technique data base.
- Supporting remote system monitoring through wireless handheld box and ethernet



# Trailblazer

## Rotary Pro



### Laser Source

**MAX**  
PHOTONICS

- It has a super compact design with the laser housed in a hermetically sealed cabinet;
- Maintenance-free Operation,
- A dehumidifier is installed within the cabinet to ensure optimal internal humidity;
- Industry-leading wall-plug efficiency our lasers are known for has reached over 40% ;
- The electrical cost savings add up to many tens of thousands of dollars over lifetime of a laser;
- Wide variety of fiber delivery options (50, 100, 150 or 200  $\mu\text{m}$ ) core diameter;
- record reliability and maintenance-free operation;
- Hot redundancy ensures 100% up time with no change in power;
- Compact Rugged Design



**I P G**  
PHOTONICS

### FEATURES

- up to 20,000 watts of Fiber Power:
- Wavelength 1.07  $\mu\text{m}$
- Continuous Wave (CW) Laser Output
- Water-cooled Industrial Performance
- Direct Modulation up to 50 kHz
- High Reliability with 2-Year Warranty





# Trailblazer

## Rotary Pro



### TOPSINN



### Dust Collection

- The appearance is simple and elegant, stable and elegant
- The humanized operation panel is more classic and delicate
- Built-in controller form, performance and quality are more guaranteed
- Stable operation, low noise, high efficiency
- No regular maintenance required, lower cost
- High negative pressure, large suction, higher filtration rate.

- Powerful Cooling Genuine S&A water chiller uses standard R134a refrigerant to keeps the laser cutting and engraving
- Large Capacity Water Tank. Water tank features closed design to reduce water evaporation and provide long service between fills; Precision scale shows water level; Easy to observe and know when water filling is needed.
- Precise Temperature Control S&A industrial water coolers have dual mode temperature control (automatic and intelligent), It can keeps the temperature constant within 0.3°C; Constant & Intelligent temperature mode; Automatically adjust the temperature according to the indoor environment temperature; Manually set the temperature between 5-40 degree



### Foldable 6-Panel System

#### Features

- Foldable, for ease of storage
- Light weight and wheeled, for maximum mobility
- Unique, 360° light-tight hinge technology
- Heavy-duty extruded aluminum frame
- Certified laser safety barrier panels (M5P06)